



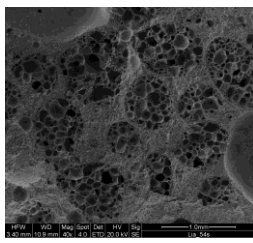
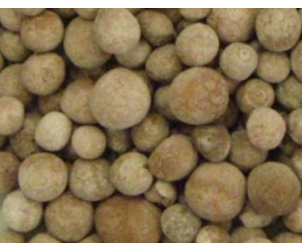
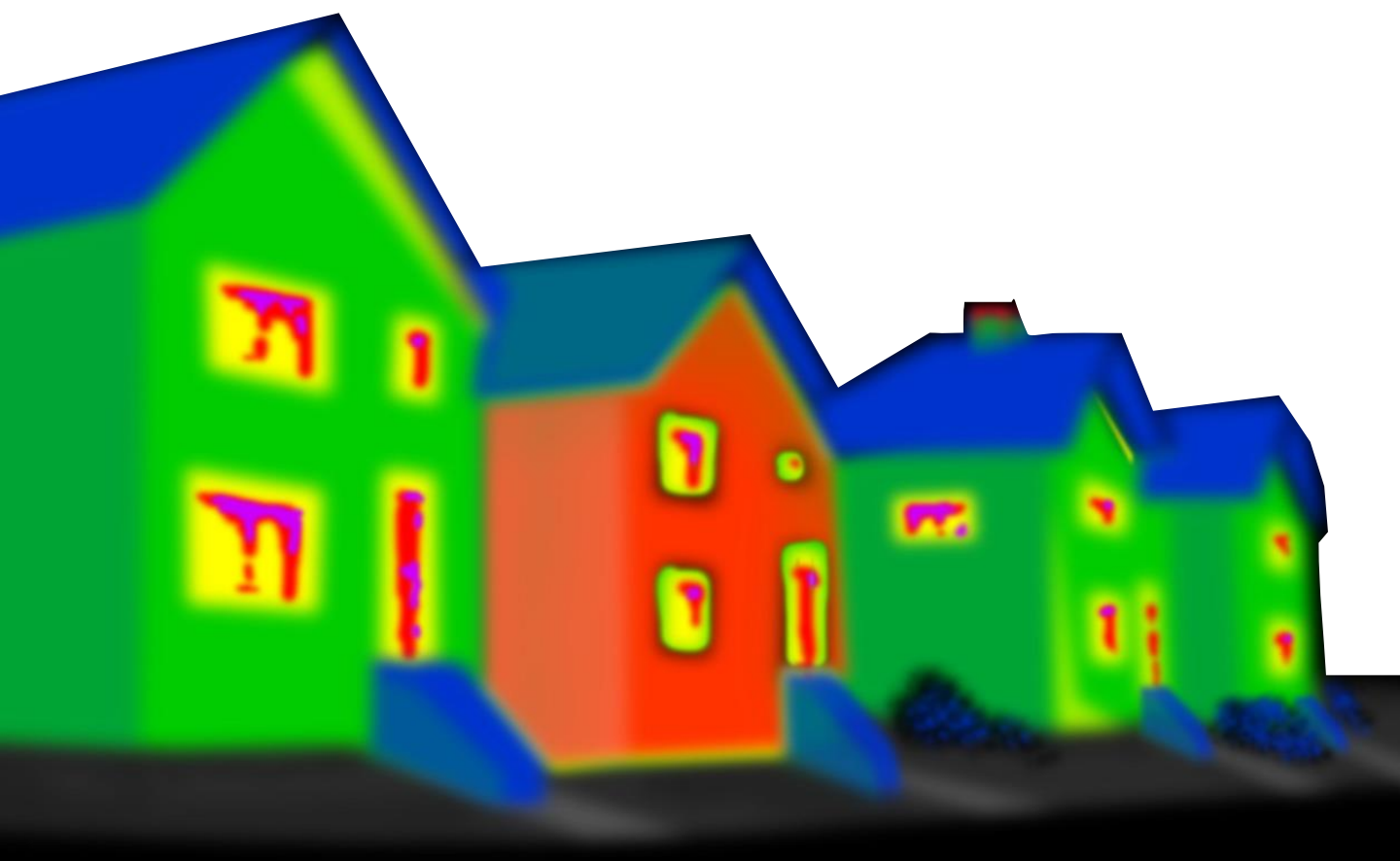
# *Insularis*

*Comfort by design*

## A solution for energy efficient construction

Insularis is a construction solution for improving Energy Efficiency in buildings/housing consisting of:

- A concrete technology (mix design and admixture system) that provides thermal insulation and acoustic reduction
- Construction solutions made of Insularis concrete leading to benefits such as saving, improve comfort and increase living space



## Insularis® offers

- Concrete technology
- Construction solution based on Insularis® concrete technology

## Insularis® concrete technology

- Characteristics
  - 100% ready-mix concrete solution
  - Composed of light weight aggregates
  - A** Structural concrete with high thermal insulation performances
  - B** Ultra light weight concrete design for insulation
- Fresh Properties
  - Self Compacting Concrete > 600mm
  - Workability retention ≥ 90 min
  - Pumpable concrete
- Harden Properties of Insularis® **A**
  - Thermal conductivity  $\lambda = 0.3$  W/mK
  - Compressive strength : 20MPa to 40MPa
  - Low density ≤ 1400Kg/m<sup>3</sup>
- Harden Properties of Insularis® **B**
  - Thermal conductivity  $\lambda = 0.07$  W/mK
  - Low density ≤ 600Kg/m<sup>3</sup>

## Insularis® construction solution

- Insularis® concrete technology can be combined with a number of construction systems, to provide energy efficiency
  - Concrete + isolation materials
  - Thermomass system
  - Defoam-Foam (100% RMX solution) – combination of **A** + **B**

## Contacts

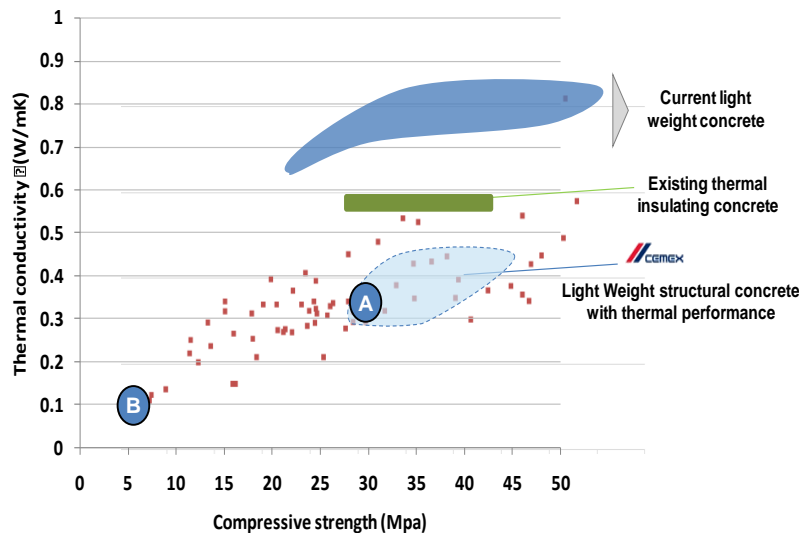
Alexandre Guerini  
 Products Development & Industrialization Director  
 Office: +41 (0)32 366 5806  
 Mobile: +41 (0)79 67 45 261  
 Email: alexandre.guerini@cemex.com

## Added value propositions

- Energy savings (up to 20%)
- Thermal bridge reduction (up to 95%)
- Time saving - 100% concrete solution
- Increase of living space (5%)

## Applications

- Residential - small buildings (2 floors)
- Housing individual or collective



## Insularis construction solution Laboratory sample

